



E&V ID: W-0466EX

IBIZA - OLD TOWN

Charming townhouse with sunny rooftop terrace

TOTAL SURFACE

approx. 80 m²

ASKING PRICE

€670,000

NUMBER OF BEDROOMS

2

TOTAL NUMBER OF BATHROOMS

2



Property Details

Total Surface	Number of Bedrooms	Asking price
approx. 80 m ²	2	€670,000
Total Number of Bathrooms	Balcony	Rooftop Terrace Size
2	✓	32 m ²
Views		
Open View, Green View, Building View		

Commission Text

Availability upon agreement.
Engel & Völkers does not accept responsibility as the information provided in this brochure is for information only and it is subject to errors, omissions, change of price or withdrawal without notice.

Taxes, notary and registry fees must be paid by purchaser, the commission to E&V paid by the seller as stipulated by Spanish regulations.



Property Description

Set in the historic neighbourhood, just steps from Ibiza's iconic fortified old town, this single-family home offers the opportunity to enjoy the vibrant Ibiza lifestyle.

On the first floor, the property features two bedrooms and two bathrooms, both benefiting from generous natural light.

The upper floor comprises the main living area, with an open-plan kitchen connected to the living and dining space. From here, there is direct access to the highlight of the home: a spacious rooftop terrace with wonderful views over the surrounding neighbourhood

and towards Dalt Vila. This level also includes a guest toilet and direct access to the street.

Although situated within a traditional pedestrian area, the home benefits from convenient nearby car access, ensuring comfortable day-to-day living for such a central location.

With its privileged setting, bright interiors and inviting outdoor space, this property represents an excellent option for those wishing to experience the historic heart of Ibiza.



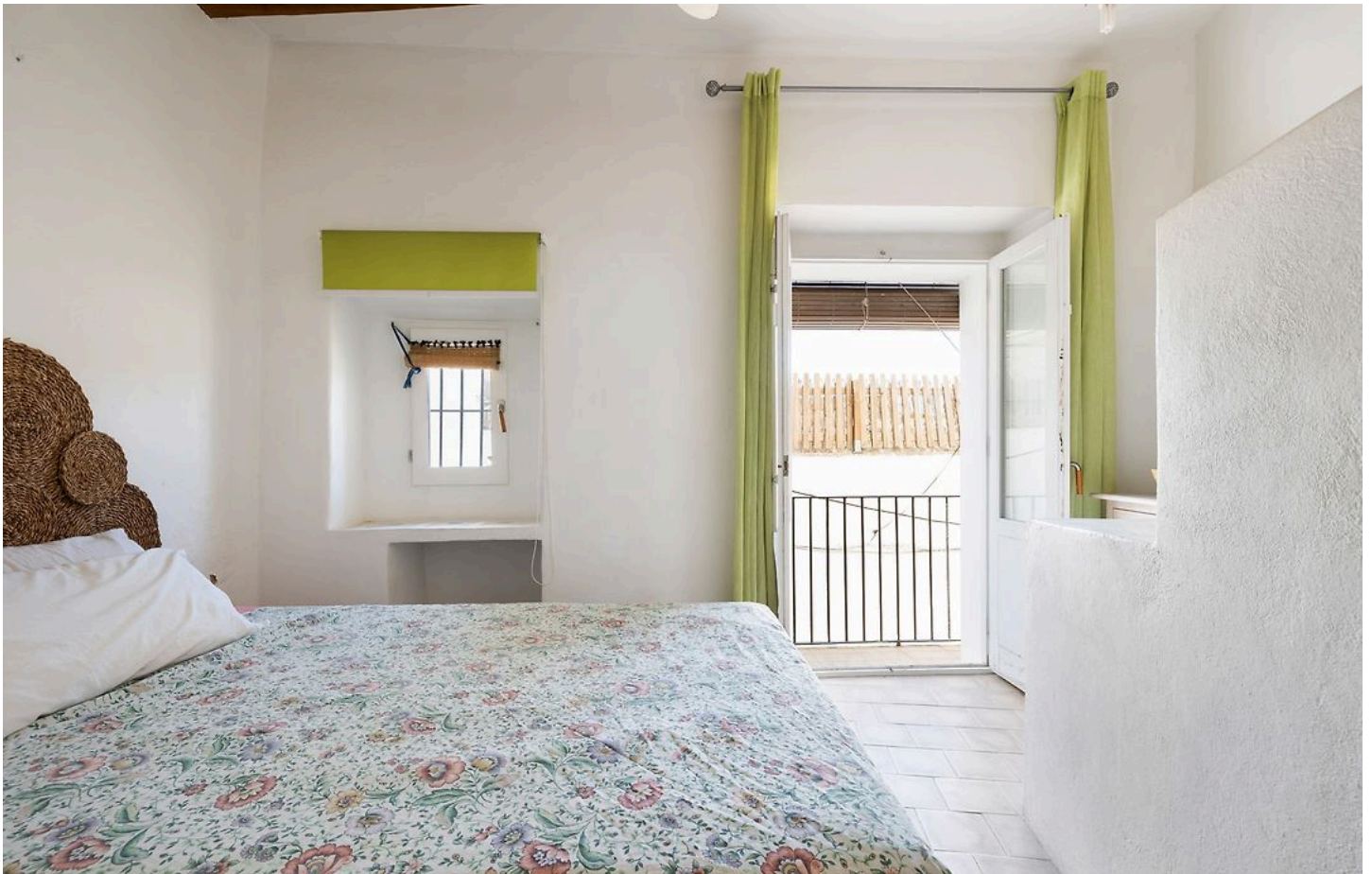
Location Description

Sa Penya, in the historic centre of Ibiza and part of the World Heritage Site, is known for its narrow cobbled streets, whitewashed houses and bohemian atmosphere. Next to the port and at the foot of Dalt Vila, it combines traditional charm with vibrant nightlife

and panoramic views. The airport is about 10 minutes away by car, and the nearest beaches—Figueretas and Talamanca—are just 5 minutes away.











ESCALA DE LA CALIFICACIÓN ENERGÉTICA		Consumo de energía kW h / m ² año	Emisiones kg CO ₂ / m ² año
A más eficiente			
B			
C			
D			
E		98,79	31,02
F			
G menos eficiente			

Energy information

Important Notice

In compliance with the current Personal Data Protection Law, we inform you that your personal data were included in an automated file owned by Engel & Völkers Ibiza, S.L., with CIF B57138182 and fiscal address at Avda. Santa Eulalia, 17 bajos, 07800 Ibiza, Spain, to attend to the commitments derived from the relationship between the two parties. Engel & Völkers Ibiza, S.L. informs that all data will be handled lawfully, loyally transparently, appropriately, suitably, with restrictions, precisely and kept up to date. You may exercise your right to access, rectify, limit treatment, suppress, withdraw and oppose to your personal data treatment, as well as the consent provided for its treatment by sending your request by email to lbiza@engelvoelkers.com.

